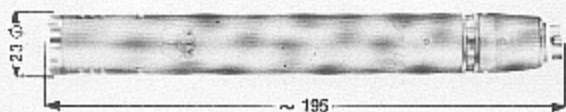


Dimensions (mm.):

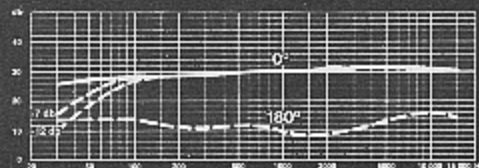


D224

Built in windshield

Separate compensating windings against stray magnetic field interference on both systems

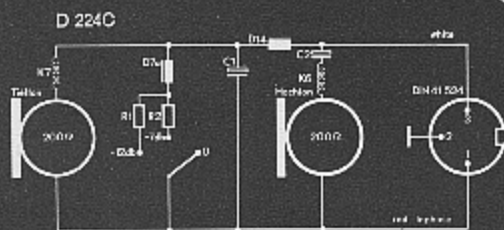
FREQUENCY RESPONSE CURVE:



Automatic cross-over network for bass and treble capsules

Rear sound entry slots

Available with DIN and Cannon connections



Objective sound transmission through two optimal sized dynamic systems

High frequency system (800—20 000 Hz)

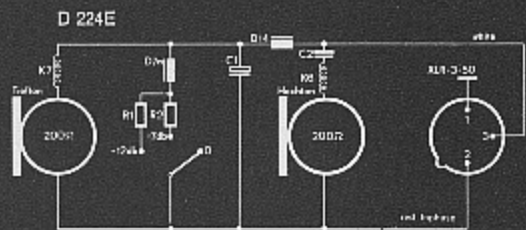
POLAR DIAGRAM:



Low frequency system (20—800 Hz) with 23 mm. diameter capsule

Acoustical resistance tube for low frequency capsule

Three position bass-cut switch to reduce rumble and handling noise (0, -7, -12 db at 50 Hz)



Technical data:

Type: Dynamic pressure gradient receiver in two way system — separate high frequency and low frequency circuit
 Frequency response: 20 . . . 20 000 Hz
 Sensitivity at 1000 Hz: 0.13 mV/μbar (-78 dbv)
 Impedance at 1000 Hz: 250 ohms ± 15%
 Min. Actual Load Impedance: 500 ohms
 Directional polar response: Cardioid
 Weighted Noise Level: 0.26 μveff (Filter CCITT-C/DIN 45 405)
 Unweighted Noise Level: 0.2 μveff
 Max. Sound Pressure Level for a non-linear distortion factor of 0.5%:
 500 μbar (128 db SPL)
 Diaphragm: MAKROFOL®

When ordering please note:

D 224C: with built-in 3-conductor DIN-plug T 3262
 D 224E: with built-in 3-conductor Cannon-plug XLR-3-50

Weight:

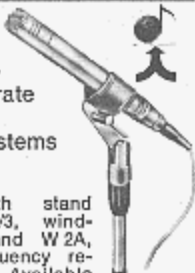
D 224: 260 grams net
 With individual packing: approx. 650 grams

Accessories:

(How to order please refer to the price-list)
 Windscreens: W 2, W 2A
 Boom attachment: H 6
 Stand adapter: SA 16/3
 Table stands: St 1, St 4, St 12, St 305
 Floor stands: St 12, St 30, St 102A, St 200
 Mating connector: D 224C: 3-conductor DIN-connector
 D 224E: 3-conductor Cannon-connector XLR-3-11C
 Microphone cables: D 224C: MK 1/5, 1/10
 D 224E: MK 4/5

D 224

Dynamic
cardioid
studio micro-
phone. Separate
low and high
frequency systems



Complete with stand
adapter SA 18/3, wind-
shields W 2 and W 2A,
individual frequency re-
sponse curve. Available
with either Cannon XLR-3-11C con-
nector (D 224E) or DIN PC 1/2 con-
nector (D 224C)

Impedance: 250 ohms

Frequency
response:

20 ... 20 000 Hz

Sensitivity:

0.13 mv/ μ bar

(-78 dbv)



TWOWAYCARDIOID® Dynamic Microphone

D 224 E



AKG has developed the revolutionary **TWOWAYCARDIOID®** dynamic microphones in 1964. Two cardioid microphone elements (one for high and one for low frequencies) are phased together by means of a built-in crossover network. Thus the perfect cardioid pattern becomes independent of frequency. Due to a long low frequency sound path, the usual proximity effect is completely absent. The built-in three step bass-cut (0, -7, -12 dB, at 50 Hz) reduces low-frequency noise.

A hum compensation coil avoids pickup of magnetic stray fields. Robust all-metal housing, satin nickel plated.

Since its frequency response is independent of distance and angle of sound incidence, the D 224 meets all requirements for an uncoloured sound pickup in broadcast, TV, and recording studios. It is especially suitable for instruments with high sound levels and wide frequency ranges.

Included Accessories:

SA 40 Stand adapter
W 2 + W 2A Foam windscreens
Individual frequency curve

Optional Accessories:

MK 9/10 10 metre connecting cable
St 102 A, St 200 Floor stands
St 1, St 5, St 12, St 305 Table stands
W 22 All-metal windscreen
H 10 Stereo bar
SA 18/3, SA 26 Stand adapters
H 30 Elastic suspension



Technical Data:

- Type: Double element pressure gradient receiver
- Directional characteristics: frequency independent cardioid
- Frequency range: 20 to 20,000 Hz
- Sensitivity at 1,000 Hz: 1.3 mV/Pa (0.13 mV/ μ b) Δ - 78 dBV ref. 1 μ b
- Impedance at 1,000 Hz: 260 ohms
- Max. sound pressure for THD of 0.5%: 50 Pa Δ 128 dB SPL
- Hum sensitivity at 50 Hz: 3 μ V/5 μ T
at 100 Hz: 6 μ V/5 μ T
- Permissible climatic conditions: temperature range: -10° C to +60° C
relative humidity: 90% (20° C to 60° C)
- Connector: 3-pin XLR-type
- Bass-cut filter: switchable to 0, -7 or -12 dB cut at 50 Hz
- Housing material: brass, nickel plated
- Dimensions: 23 \varnothing x 195 mm (0.9 \varnothing x 7.7 inch)
- Net weight: 280 g (10 oz)
- Shipping weight: 700 g (1.5 lb)